

Grey Fox



**FLOAT**

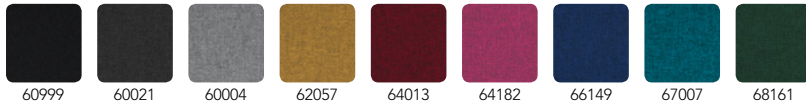


## FLOAT Armchair description

Modular soft seating system  
Moulded beech laminate back and arm support  
Dome topped PU foam swivel seat mounted on canting frame  
Hand crafted upholstery with combustion modified high resilient (cmhr) foam.

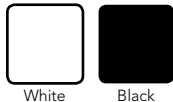
### Fabric

**Gabriel** Step Melange Range

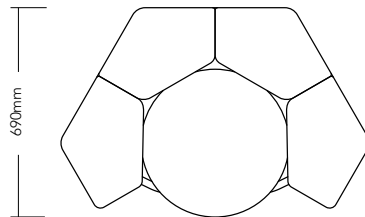


### Steel Frame

High tensile steel tubing frame, epoxy powder coated finish

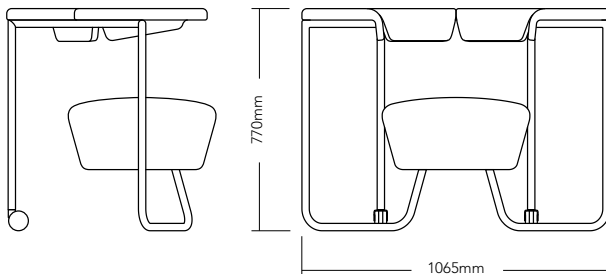


Optional frame finish available on request



### Dimensions

LxWxH- 1065 x 690 x 770mm



### Castors

Twin wheel high load swivel castor





## FLOAT Table description

Hexagonal modular table  
Furniture linoleum table top  
Engineered colour core MDF substrate

### Table Surface Finish

**Forbo** Naturally Flexible Surfacing Material



4175 Pebble

### Steel Frame

High tensile steel tubing frame, epoxy powder coated finish



White

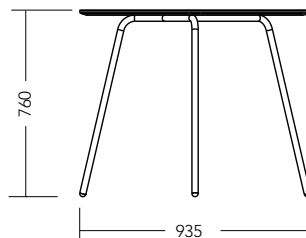
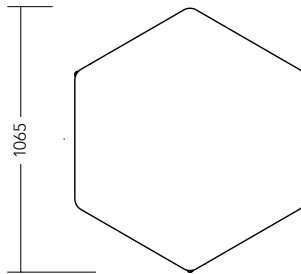


Black

Optional frame finish available on request

### Dimensions

LxWxH- 1065 x 935 x 760mm



**Grey Fox Design Limited**

Casement House, Baldonnell Business Park, Baldonnell, Dublin 22, Ireland  
info@greyfox.ie www.greyfox.ie

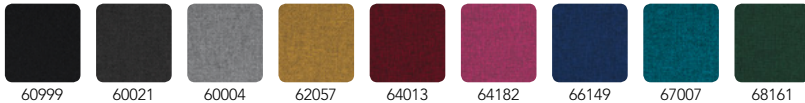


## FLOAT Stool description

Modular soft seating system  
Dome topped PU foam swivel seat on 3 leg frame  
Hand crafted upholstery with combustion modified high resilient (CMHR) foam

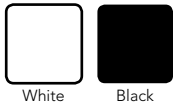
## Fabric

### Gabriel® Step Melange Range

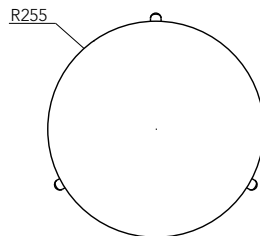


## Steel Frame

High tensile steel tubing frame, epoxy powder coated finish



Optional frame finish available on request



## Dimensions

LxWxH- 510 x 510 x 456mm

